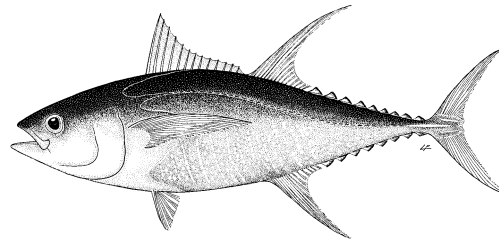


## APPENDIX 4

### EXECUTIVE SUMMARY: YELLOWFIN TUNA (2022)



**Table 1.** Status of yellowfin tuna (*Thunnus albacares*) in the Indian Ocean

Area <sup>1</sup>	Indicator	Value	Status <sup>4</sup>
Indian Ocean	Catch in 2021 (t) <sup>2</sup>	416,235	68%*
	Average catch 2017-2021 (t) <sup>3</sup>	435,225	
	MSY (1,000 t) (80% CI)	349 (286-412)	
	F <sub>MSY</sub> (80% CI)	0.18 (0.15-0.21)	
	SB <sub>MSY</sub> (1,000 t) (80% CI)	1,333 (1,018-1,648)	
	F <sub>2020</sub> / F <sub>MSY</sub> (80% CI)	1.32 (0.68-1.95)	
	SB <sub>2020</sub> / SB <sub>MSY</sub> (80% CI)	0.87 (0.63-1.10)	
	SB <sub>2020</sub> / SB <sub>0</sub> (80% CI)	0.31 (0.24-0.38)	

<sup>1</sup>Boundaries for the Indian Ocean stock assessment are defined as the IOTC area of competence

<sup>2</sup>Proportion of 2021 catch fully or partially estimated by IOTC Secretariat: 18%

<sup>3</sup>Including re-estimations of EU PS species composition for 2018 (only requested for stock assessment purposes)

<sup>4</sup>The stock status refers to the most recent years' data used in the assessment conducted in 2021, i.e., 2020

**Table 2.** Probability of stock status with respect to each of four quadrants of the Kobe plot. Percentages are calculated as the proportion of model terminal values that fall within each quadrant with model weights taken into account

Colour key	Stock overfished (SB <sub>2020</sub> / SB <sub>MSY</sub> < 1)	Stock not overfished (SB <sub>2020</sub> / SB <sub>MSY</sub> ≥ 1)
Stock subject to overfishing (F <sub>2020</sub> / F <sub>MSY</sub> ≥ 1)	68%	2%
Stock not subject to overfishing (F <sub>2020</sub> / F <sub>MSY</sub> ≤ 1)	13%	17%
Not assessed / Uncertain		

#### INDIAN OCEAN STOCK – MANAGEMENT ADVICE

**Stock status.** No new stock assessment was carried out for yellowfin tuna in 2022 and so the advice is based on the 2021 assessment. The 2021 stock assessment was carried out using Stock Synthesis III (SS3), a fully integrated model that is currently used to provide scientific advice for the three tropical tunas stocks in the Indian Ocean. The model used in 2021 is based on the model developed in 2018 with a series of revisions that were noted during the WPTT in 2018, 2019 and 2020. The model uses four types of data: catch, size frequency, tagging and CPUE indices. The proposed final assessment model options correspond to a combination of model configurations, including alternative assumptions about the spatial structure (2 options), longline CPUE catchability (2 options on the effect of piracy), weighting of the tagging dataset ( $\lambda = 0.1$  or 1), steepness values (0.7, 0.8, and 0.9), natural mortality values (2 options), and growth parameters (2 options). The model ensemble (a total of 96 models) encompasses a range of stock dynamics.

A number of sensitivity runs were conducted to address additional uncertainty, including two new natural mortalities (based on maximum age of 10.9 and 18, respectively), a new growth curve (based on the most recent aging study), an assumed longline catchability increase (1% per year), as well as a model that includes only the Japanese size data for the Longline fishery. The results of these models generally indicate a more pessimistic stock status and would lower the estimated median biomass if included in the final grid of models. However, the results from the sensitivity runs were within the range of uncertainty estimated by the model grid. The sensitivity models still require further exploration to ensure uncertainty is being captured appropriately and models are not mis-specified. Other key uncertainties (for example, catch levels) were not explored.

The new model grid represents a marked improvement over the previous results available in 2018 and incorporates a far wider range of uncertainty. According to the information available in 2021, the total catch has remained above the estimated MSY since 2012 (i.e., between 399,000 t and 448,642 t), with the 2019 catch (448,642 t) being the largest since 2010 (for details see WPTT23 report).

Overall stock status estimates do not differ substantially from the previous assessment. Spawning biomass in 2020 was estimated to be 31% on average of the unfished (1950) levels (**Table 1**). Spawning biomass estimates have been generally declining over time and particularly since 2011 (**Fig. 3**). Spawning biomass in 2020 was estimated to be 87% of the level that supports the maximum sustainable yield ( $SB_{2020}/SB_{MSY} = 0.87$ ). Current fishing mortality is estimated to be 32% higher than  $F_{MSY}$  ( $F_{2020}/F_{MSY} = 1.32$ ). The probability of the stock being in the red Kobe quadrant in 2020 is estimated to be 68%. On the weight-of-evidence available since 2018, the yellowfin tuna stock is determined to remain **overfished** and **subject to overfishing** (**Table 1** and **Fig. 4**).

It is noted that the estimated productivity of the stock (MSY) was very low for some of the scenarios of the reference grid. Their plausibility and reasons for this low productivity are yet to be fully investigated. It is noted that there is also considerable uncertainty in the reported catches by some fisheries. In particular, several artisanal fisheries have increased their catches substantially in recent years, the implication of which should be further investigated. There was a lack of information to explain this sharp increase in catch. Inconsistencies in the biomass trend by region also remain unresolved and this also deserves further investigation.

**Outlook.** The increase in catches in recent years has substantially increased the pressure on the Indian Ocean stock, resulting in fishing mortality exceeding the MSY-related levels. The critical errors in the projections and estimations for computing probabilities in the K2SM developed in 2018 have been addressed and the updated projections no longer suffer from the issues previously experienced.

### Management advice

For each catch scenario, the probability of the biomass being below the  $SB_{MSY}$  level and the probability of fishing mortality being above  $F_{MSY}$  were determined over the projection horizon using the delta-MVLN estimator (Walter & Winker 2020), based on the variance-covariance derived from estimates of  $SB/SB_{MSY}$  and  $F/F_{MSY}$  across the model grid. According to the K2SM (**Table 3**),

- If catches are reduced to 60% of 2020 levels<sup>1</sup> there is >50% probability of being above  $SB_{MSY}$  levels by 2023.
- if catches are reduced to < 80% of 2020 levels there is a >50% probability of being above  $SB_{MSY}$  in 2030.
- if catches are reduced to less than 80% of 2020 levels there would be a >50% probability of ending overfishing ( $F < F_{MSY}$ ) by 2023 and also by 2030.
- The probability of breaching the biological limit reference point ( $0.4SB_{MSY}$ ) with 2020 catches is 7% by 2023 and 64% by 2030. The probability of breaching the F limit reference point ( $1.4 F_{MSY}$ ) with 2020 catch is 52% by 2023 and 78% by 2030.

The Commission has an interim plan for the rebuilding the yellowfin stock, with catch limitations based on 2014/2015 levels (Resolution 21/01 which superseded 19/01, 18/01 and 17/01). Some of the fisheries subject to catch reductions have achieved a decrease in catches in 2021 in accordance with the levels of reductions specified in the Resolution; however, these reductions were offset by increases in the catches from CPCs exempt from and some CPCs subject to limitations on their catches of yellowfin tuna.

The following key points should also be noted:

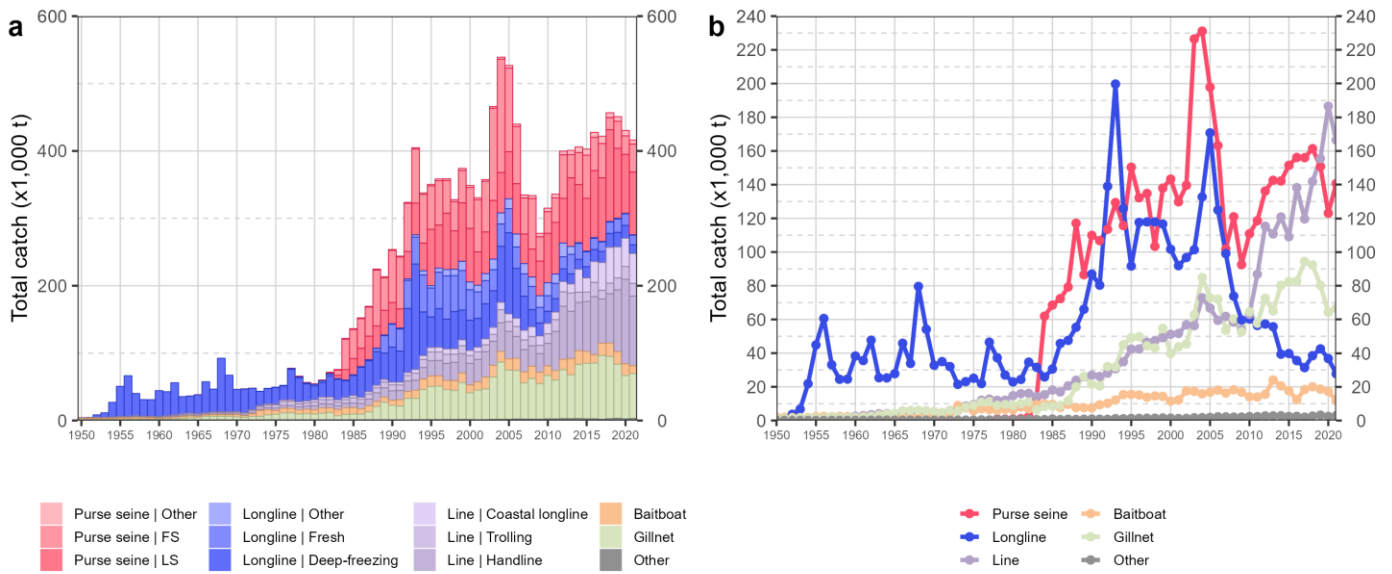
---

<sup>1</sup> 2020 catch levels indicate the nominal catch available to the WPTT at its session in October 2021 (WPTT23).

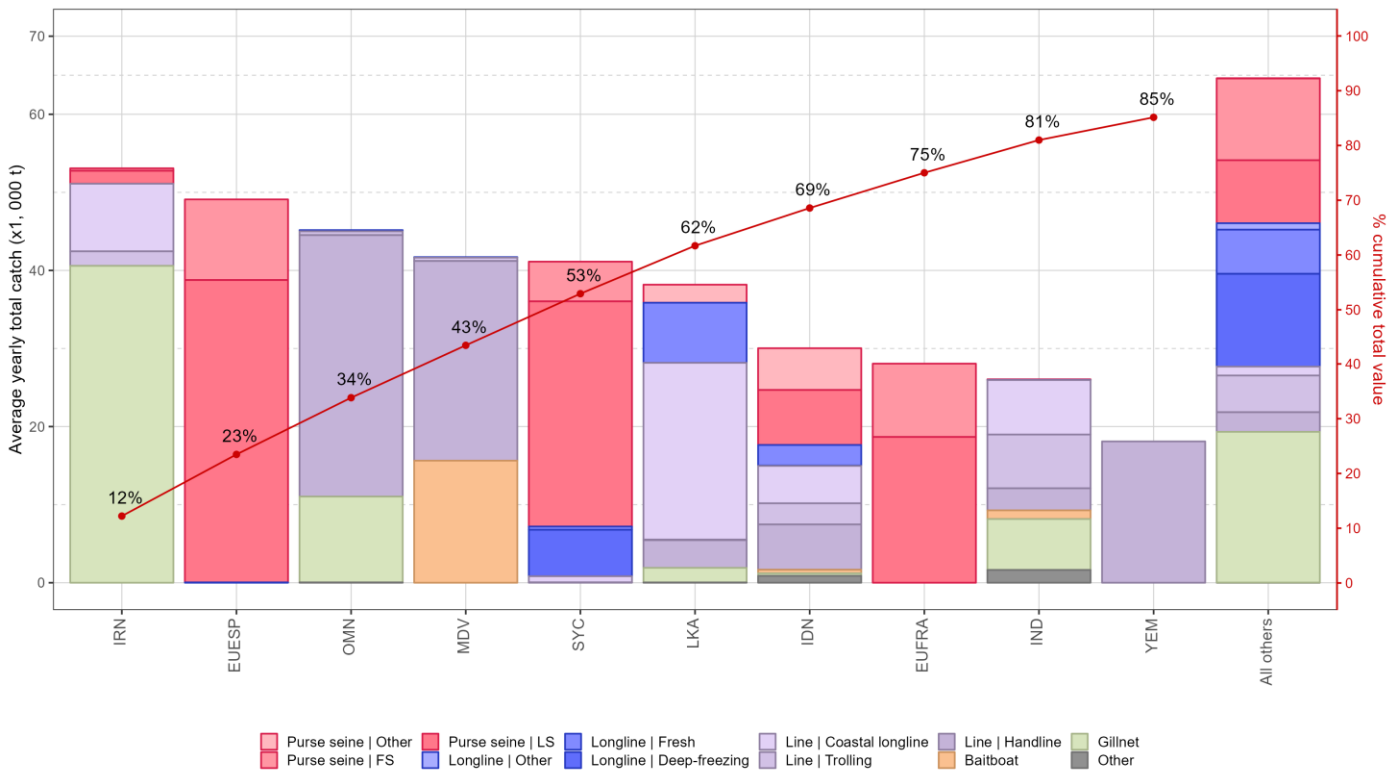
- **Maximum Sustainable Yield (MSY):** estimate for the Indian Ocean stock is 349,000 t with a range between 286,000-412,000 t (**Table 1**). The 2017-2021 average catches (435,225 t) were above the estimated MSY level. Although catch in 2021 reduced by 3% compared to the 2020 level, the last year catch remained substantially higher than the median MSY.
- **Interim reference points:** Noting that the Commission in 2015 agreed to Resolution 15/10 on target and limit reference points and a decision framework, the following should be noted:
- **Fishing mortality:** 2020 fishing mortality is considered to be 32% above the interim target reference point of  $F_{MSY}$ , and below the interim limit reference point of  $1.4 * F_{MSY}$  (**Fig. 4**).
- **Biomass:** 2020 spawning biomass is considered to be 13 % below the interim target reference point of  $SB_{MSY}$  and above the interim limit reference point of  $0.4 * SB_{MSY}$  (**Fig. 4**).
- **Catch data uncertainty:** the overall quality of the nominal catches of yellowfin tuna shows some large variability between 1950 and 2020. In some years, a large portion of the nominal catches of yellowfin tuna had to be estimated, and catches reported using species or gear aggregates had to be further broken down. The data quality was particularly poor between 1994 and 2002 when less than 70% of the nominal catches were fully or partially reported, with most reporting issues coming from coastal fisheries. The reporting rate has generally improved over the last decade however detailed information on data collection procedures, which determines the quality of fishery statistics, is still lacking.
- **Main fisheries (mean annual catch 2017-2021):** yellowfin tuna are caught using line (35.4%), followed by purse seine (33.6%) and gillnet (18.3%). The remaining catches taken with other gears contributed to 12.7% of the total catches in recent years (**Fig. 1**).
- **Main fleets (mean annual catch 2017-2021):** the majority of yellowfin tuna catches are attributed to vessels flagged to I. R. Iran (12.2%) followed by EU (Spain) (11.3%) and Sultanate of Oman (10.4%). The 35 other fleets catching yellowfin tuna contributed to 66.1% of the total catch in recent years (**Fig. 2**).

## References

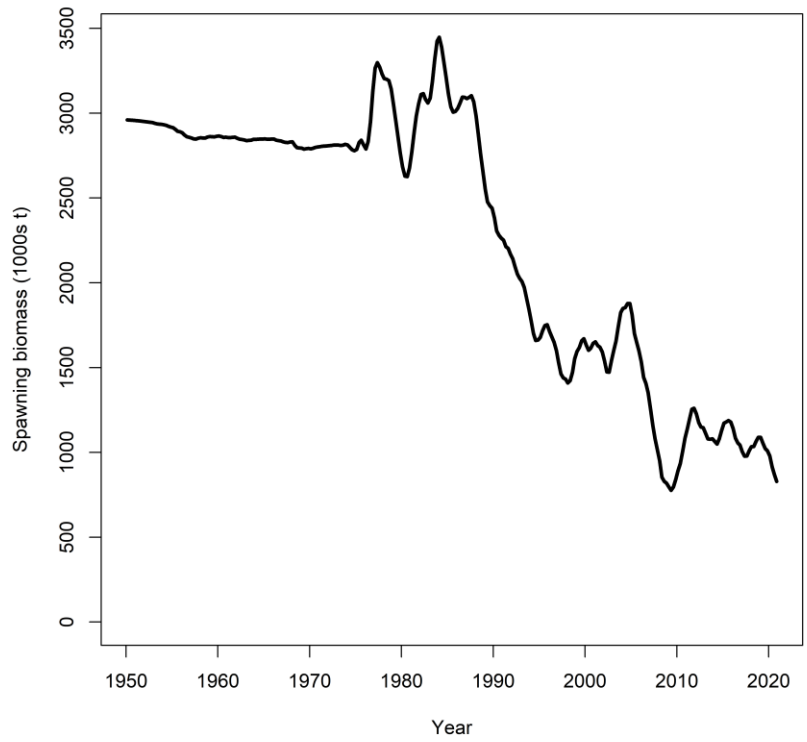
Walter, J., Winker, H., 2020. Projections to create Kobe 2 Strategy Matrices using the multivariate log-normal approximation for Atlantic yellowfin tuna. *Collect. Vol. Sci. Pap. ICCAT*, 76(6): 725-739



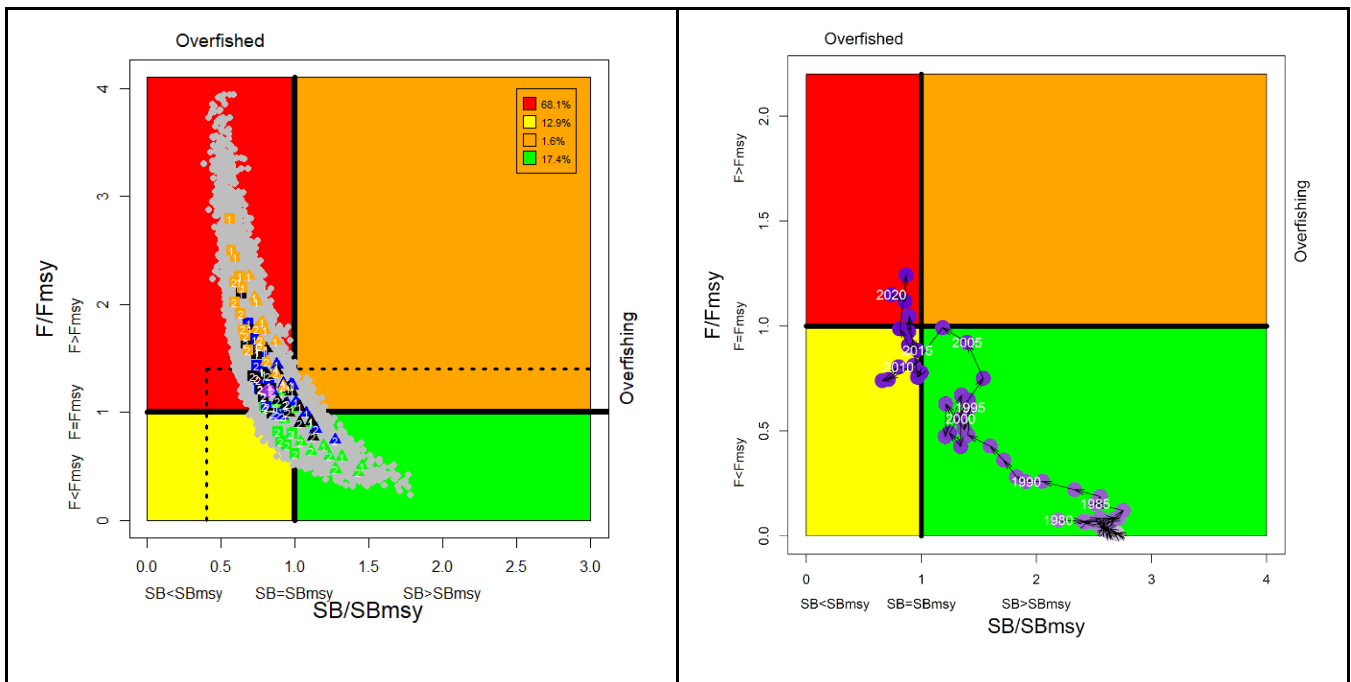
**Fig. 1.** Annual time series of (a) cumulative nominal catches (metric tonnes; t) by fishery and (b) individual nominal catches (metric tonnes; t) by fishery group for yellowfin tuna during 1950–2021. FS = free-swimming school; LS = school associated with drifting floating objects. Purse seine | Other: coastal purse seine, purse seine of unknown association type, ring net; Longline | Other: swordfish and sharks-targeted longlines; Other: all remaining fishing gears



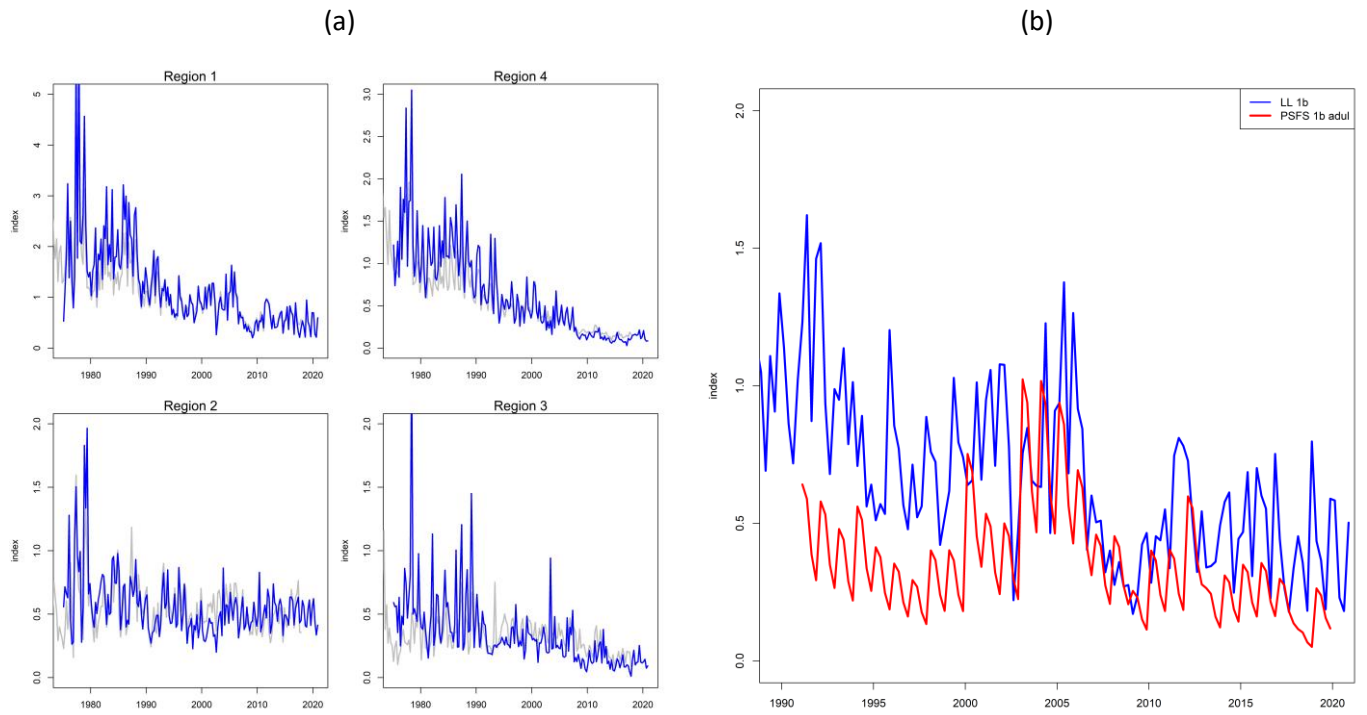
**Fig. 2.** Mean annual catches (metric tonnes; t) of yellowfin tuna by fleet and fishery between 2017 and 2021, with indication of cumulative catches by fleet. FS = free-swimming school; LS = school associated with drifting floating objects. Purse seine | Other: coastal purse seine, purse seine of unknown association type, ring net; Longline | Other: swordfish and sharks-targeted longlines; Other: all remaining fishing gears



**Fig 3.** Estimated time series (1950-2020) of total spawning biomass of yellowfin tuna (left) from the reference model of the 2020 assessment.



**Fig. 4.** Yellowfin tuna: SS3 Indian Ocean assessment Kobe plot: (left): current (2020) stock status, relative to  $SB_{MSY}$  (x-axis) and  $F_{MSY}$  (y-axis) reference points for the final model options. Coloured symbols represent Maximum posterior density (MPD) estimates from individual models: square and Triangles and represents LL CPUE catchability options  $q_1$  and  $q_2$  respectively; green, blue, black, and orange represents growth and natural mortality option combination  $G_{base\_Mbase}$ ,  $G_{Dortel\_Mbase}$ ,  $G_{base\_Mlow}$ , and  $G_{Dortel\_Mlow}$  respectively; 1,2, represents spatial structure option  $i_o$  and  $s_p$  respectively. The purple dot represents the base model. Grey dots represent uncertainty from individual models. The dashed lines represent limit reference points for IO yellowfin tuna ( $SB_{lim} = 0.4 SB_{MSY}$  and  $F_{lim} = 1.4 F_{MSY}$ ); (right) stock trajectory from the base model



**Fig 5.** Standardised CPUE indices used in the final assessment models: (a) Joint longline CPUE indices by region 1975-2020 (The grey lines are indices used in 2018 assessment 1972 – 2017), and (b) EU Purse seine free school CPUE on adults ( $\geq 10$  kg) (overlaid with the longline CPUE in region 1)

**TABLE 3.** Yellowfin tuna: Stock synthesis assessment Kobe II Strategy Matrix. Probability of violating the MSY-based target (top) and limit (bottom) reference points for constant catch projections (relative to the catch level from 2020 -40%, -30%, -20%, -10%, 0%, +10%, +20%) projected for 3 and 10 years

Alternative catch projections (relative to the catch level from 2020) and probability of violating MSY-based target reference points ( $SB_{\text{targ}} = SB_{\text{MSY}}$ ; $F_{\text{targ}} = F_{\text{MSY}}$ )							
Reference point and projection timeframe	60%	70%	80%	90%	100%	110%	120%
$SB_{2023} < SB_{\text{MSY}}$	0.45	0.56	0.68	0.74	0.76	0.82	0.88
$F_{2023} > F_{\text{MSY}}$	0.13	0.30	0.53	0.63	0.72	0.82	0.91
$SB_{2030} < SB_{\text{MSY}}$	0.1	0.33	0.54	0.76	0.93	0.99	1
$F_{2030} > F_{\text{MSY}}$	0.07	0.31	0.49	0.69	0.84	0.97	0.99
Alternative catch projections (relative to the catch level from 2020) and probability of violating MSY-based limit reference points ( $SB_{\text{lim}} = 0.4 SB_{\text{MSY}}$ ; $F_{\text{lim}} = 1.4 F_{\text{MSY}}$ )							
Reference point and projection timeframe	60%	70%	80%	90%	100%	110%	120%
$SB_{2023} < SB_{\text{Lim}}$	0	0	0	0.05	0.07	0.1	0.16
$F_{2023} > F_{\text{Lim}}$	0.03	0.11	0.25	0.43	0.52	0.63	0.78
$SB_{2030} < SB_{\text{Lim}}$	0	0	0.01	0.18	0.64	1	1
$F_{2030} > F_{\text{Lim}}$	0.02	0.19	0.33	0.60	0.78	0.98	0.98